

# NONNATIVE AQUA

that may be found

PLEASE REPORT ALL

Call the ADF&G Invasive Species Program 1-877-INVASIV (1-877-468-2748)  
Visit [www.adfg.state.ak.us/special/invasive/invasive.php](http://www.adfg.state.ak.us/special/invasive/invasive.php) for more info

Trad. Foods  
**Chugachmiut**  
HERITAGE PRESERVATION  
1840 Bragaw Street, Suite 110  
Anchorage, Alaska 99508-3463

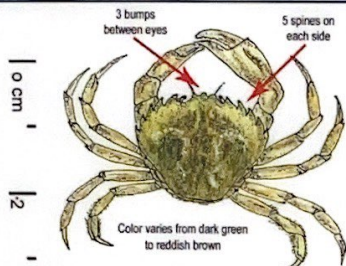
## HABITAT KEY:

rock/boulder = r/b  
cobble/gravel = c/g  
oyster beds = ob  
docks/pilings = d/p  
wood debris = wd  
mud = m  
sand = s

The animals pictured  
on this side live in  
salt-water habitats

- Not a comprehensive list
- Not to scale
- Sizes approximate

Arrows show  
identifying  
characteristics



**Carcinus maenas**, European green crab  
Carapace (body shell) width to 7.5 cm (3 in)  
s, m, c/g



**Clathria prolifera**, red beard sponge  
Height to 10 cm (4 in)  
d/p, r/b

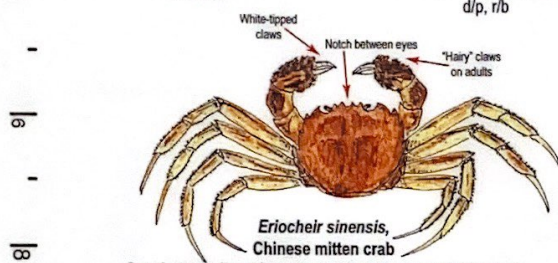
Outer shell can be  
shiny brown or darker  
and peeling



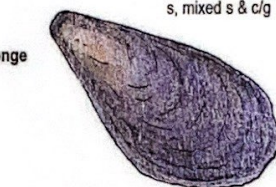
**Nuttallia obscurata**, purple varnish clam  
Width to 7.5 cm (3 in)  
s, mixed s & c/g



**Diadumene lineata**, Japanese anemone  
Height to 2.5 cm (1 in)  
r/b, d/p, wd

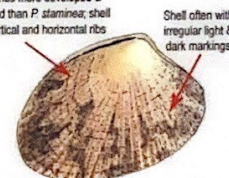


**Eriocheir sinensis**, Chinese mitten crab  
Catadromous (born & spawn in saltwater, rear in freshwater)  
Carapace (body shell) to 7.5 cm (3 in)



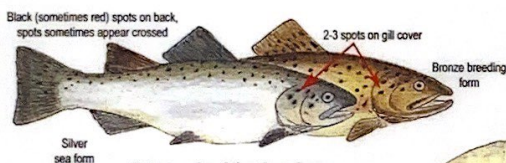
**Mytilus galloprovincialis**, Mediterranean mussel  
Length to 15 cm (6 in)  
r/b, d/p

Very similar to native *M. edulis*, *M. trossulus*

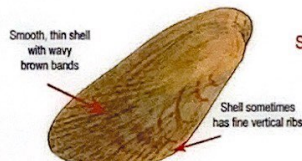


**Venerupis philippinarum**, Manila clam  
Length to 6 cm (2.5 in)  
c/g, s, m

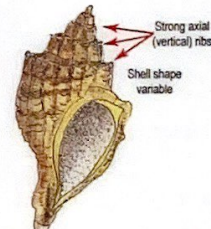
Similar to native *Protothaca staminea* (*P. staminea* is more rounded and usually lacks dark markings)



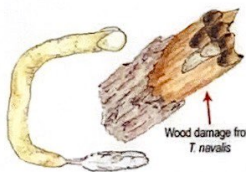
**Salmo salar**, Atlantic salmon  
In PNW - Anadromous (born & spawn in freshwater, rear in saltwater)  
Length to 1.5 m (4.5 ft)



**Musculista senhousia**, Japanese mussel  
Length to little over 2.5 cm (1 in) - m



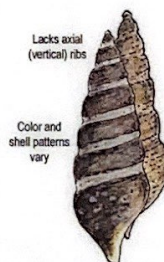
**Ocinebrellus inornatus**, Japanese oyster drill  
Height to little over 2.5 cm (1 in)  
r/b, ob



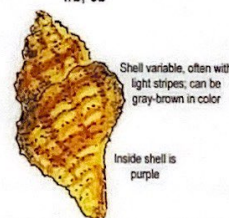
**Teredo navalis**, European (naval) shipworm  
Length from 10-30 cm (4-12 in) - d/p, wd



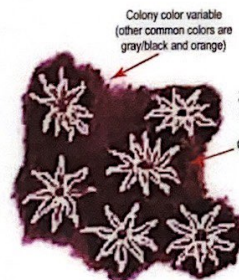
**Crepidula fornicata**, Atlantic slipper snail  
Length to 4 cm (1.5 in) - m, ob



**Batillaria attramentaria**, mud snail  
Length to 4 cm (1.5 in) - m



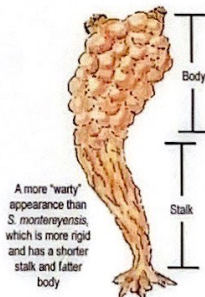
**Urosalpinx cinerea**, Atlantic oyster drill  
In PNW - r/b, ob  
Height to little over 2.5 (1 in)



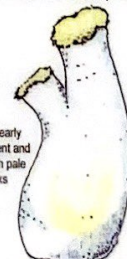
**Botryllus schlosseri**, colonial sea squirt  
Colony diameter 2.5-15 cm (1-6 in) - d/p



**Didemnum lahillei**, colonial sea squirt  
r/b, c/g, ob, d/p, wd  
Colony can be very large



**Styela clava**, solitary sea squirt  
Height to 11 cm (4.5 in) - d/p  
Similar to native sea squirt, *Styela montereyensis*



**Ciona savignyi**, solitary sea squirt  
Height to 15 cm (6 in) - d/p